

Beauty
of
the kitchen...
eterly gazing
at
itself...



"Strength and Growth
come only through continuous effort and struggle..."

BASE BEHIND BUSINESS



It all started after 1957 - the very beginning of an upcoming organization. From 1978 with manufacturing and introducing of kitchenware, kitchen sinks, dairy equipments and sheet metal industrial components all under the brand of **NAVKAR**.

Since then has been no looking back, as regard for quality paid-off to the company. Today the company enjoys a major market share in terms of customer satisfaction.

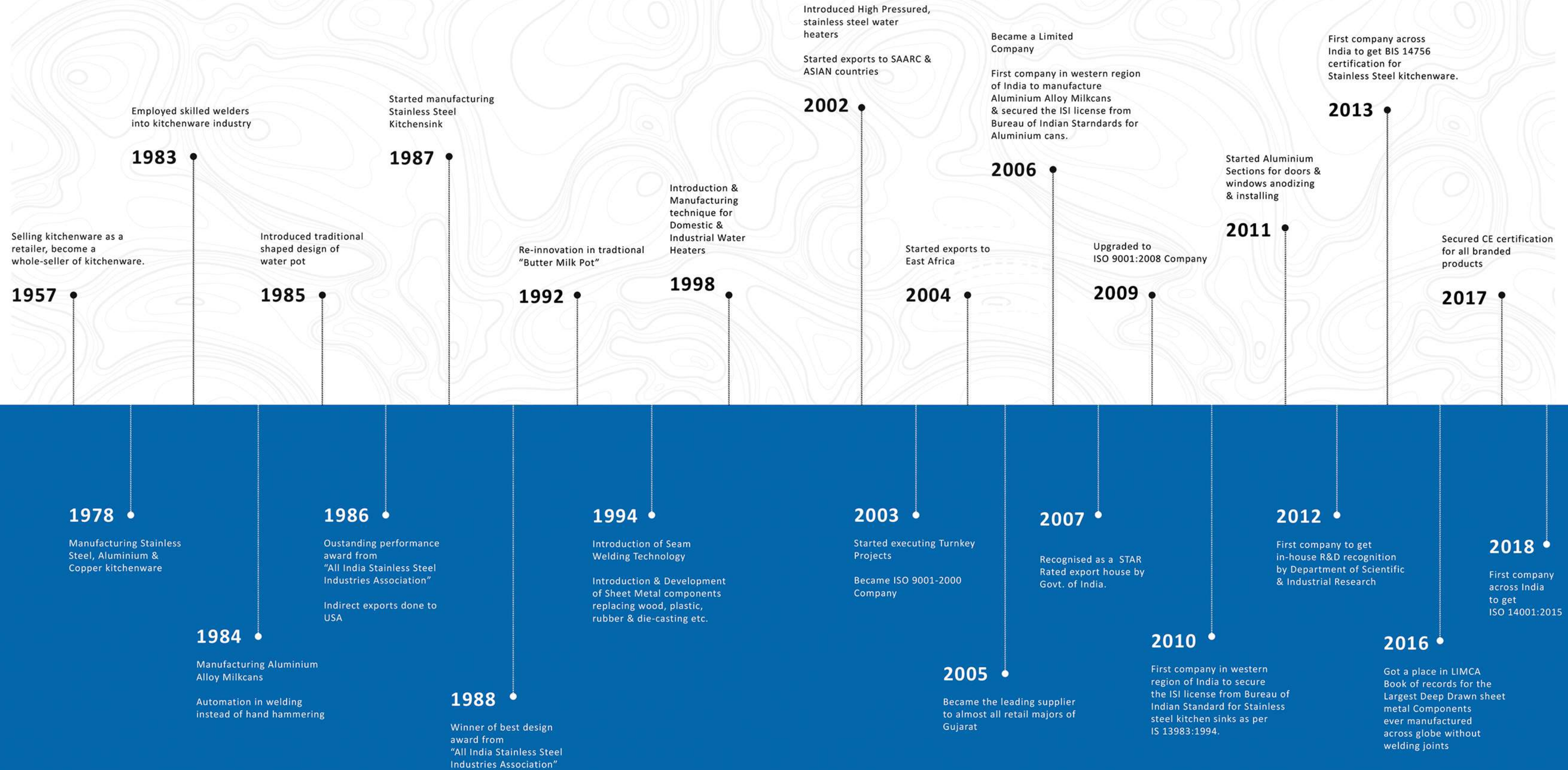
The company has a team of dedicated technical and qualified professionals catering to the needs of the market. The company has not only diversified productions but also widened the product range as well as results in offering a good product line to its consumers.

The ultimate aim of the company is to manufacture quality products and make **NAVKAR** a household name.

Company's mantra from early time till now is the same -

TO PROVIDE THE VALUE FOR MONEY TO THE CUSTOMER AND MAKING THEM DELIGHTED, LEADING TO FULL CUSTOMER SATISFACTION.

INITIATIVES & ACHIEVEMENTS



KITCHEN SINK CONCEPT

CONTEMPORARY STAINLESS STEEL

PRODUCT RANGE

200 SERIES STAINLESS STEEL

- Vandana

(200 series stainless steel - 0.5mm thickness)
- Classic

(200 series stainless steel - 0.7mm thickness)
- BOSS

(200 series stainless steel - 0.9mm thickness)
- GRACE

(200 series stainless steel Handmade matt finish sinks)

AISI 304 GRADE STAINLESS STEEL

- MID

(AISI 304 grade stainless steel - 0.8mm thickness)
- Nice

(AISI 304 grade stainless steel - 1.0mm thickness)
- Acer

(AISI 304 grade stainless steel - anti-scratch model 0.8mm thickness)
- Elegance

(AISI 304 stainless steel Handmade matt finish sinks)
- QUADRO

(AISI 304 grade stainless steel Upright square and rectangular deep drawn sinks)

ALSO AVAILABLE

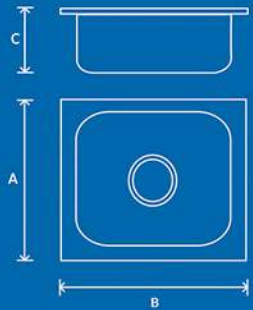
- SILICA

(Quartz sinks)

SINGLE SQUARE BOWL SINK (SB)

Range: Vandana, Classic, MID

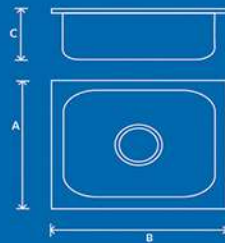
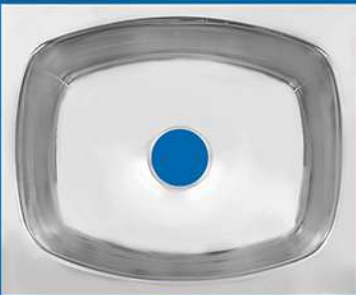
SL. No.	A" x B"	C"	Bowl size (in mm)
01	12" x 12"	4", 5", 6", 7"	241 x 267
02	16" x 16"	4", 5", 6", 7"	343 x 343
03	18" x 18"	4", 5", 6", 7"	388 x 388



SINGLE RECTANGULAR BOWL SINK (SB)

Range : Vandana, Classic, Boss, MID,
Nice, Acer

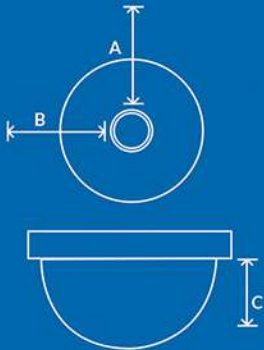
SL. No.	A" x B"	C"	Bowl size (in mm)
01	12" x 15"	4", 5", 6", 7"	267 x 343
02	16" x 18"	6", 7", 8"	330 x 400
03	17" x 20"	7", 8", 9"	370 x 450
04	18" x 21"	7", 8", 9"	370 x 450
05	18" x 22"	7", 8", 9", 10"	400 x 510
06	18" x 24"	7", 8", 9", 10"	400 x 510
07	20" x 24"	7", 8", 9", 10"	430 x 530



DEEP CIRCULAR BOWL SINK (DCB)

Range: Nice

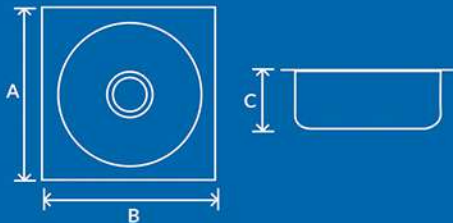
SL. No.	A" x B"	C"	Bowl size (in mm)
01	17" x 17"	6"	390 Ø



ROUND BOWL SINK (RB)

Range: Vandana, Classic

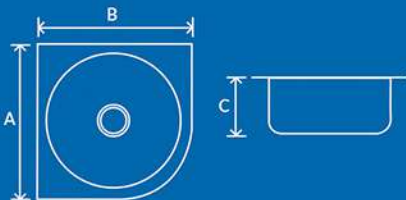
SL. No.	A" x B"	C"	Bowl size (in mm)
01	16" x 16"	5", 6"	368 Ø
02	18" x 18"	5", 6"	400 Ø



CORNER BASIN SINK (CB)

Range : Vandana, Classic, MID, Nice

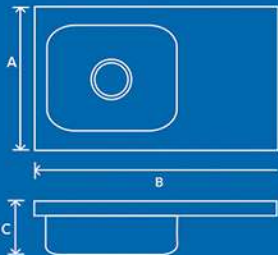
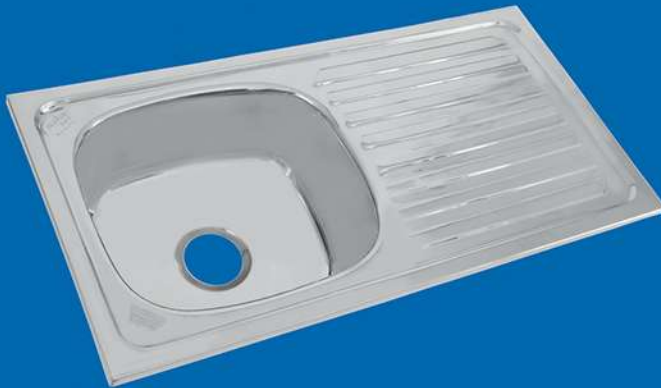
SL. No.	A" x B"	C"	Bowl size (in mm)
01	15" x 15"	6"	347 Ø



SINGLE BOWL SINGLE DRAIN SINK (SBSD)

Range : Vandana, Classic, Boss, MID,
Nice, Acer

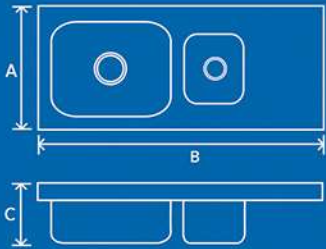
SL. No.	A" x B"	C"	Bowl size (in mm)
01	16" x 30"	5", 6", 7", 8"	305 X 356
02	18" x 30"	5", 6", 7", 8"	340 X 405
03	18" x 32"	5", 6", 7", 8"	340 X 405
04	18" x 36"	5", 6", 7", 8"	340 X 405
05	18" x 37"	5", 6", 7", 8"	340 X 405
06	20" x 40"	5", 6", 7", 8"	380 X 460
07	20" x 41"	5", 6", 7", 8"	380 X 460



ONE & HALF BOWL WITH DRAIN BOARD SINK (OHDB)

Range: Boss, Nice

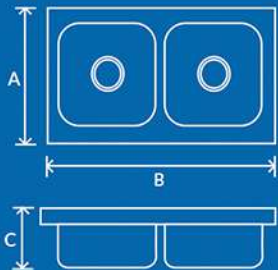
SL. No.	A" x B"	C"	Bowl size (in mm)
01	20" x 32	7", 8", 9", 10"	410 X 510



DOUBLE BOWL SINK (DB)

Range: Boss, Nice

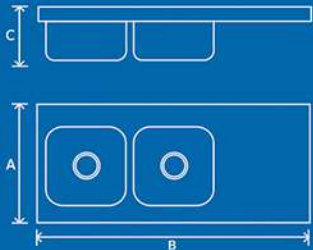
SL. No.	A" x B"	C"	Bowl size (in mm)
01	20" x 41"	7", 8", 9", 10"	460 X 380
02	20" x 45"	7", 8", 9", 10"	460 X 380
03	18" x 30"	7", 8", 9", 10"	400 X 330
04	18" x 37"	7", 8", 9", 10"	400 X 330



DOUBLE BOWL SINGLE DRAIN SINK (DBSD)

Range: Classic, Boss, Nice

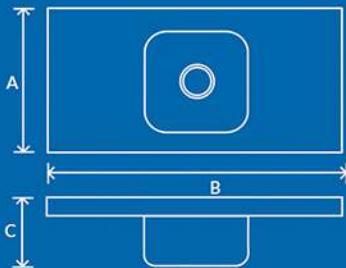
SL. No.	A" x B"	C"	Bowl size (in mm)
01	20" x 45"	7", 8", 9", 10"	410 X 360
02	20" x 48"	7", 8", 9", 10"	410 X 360



SINGLE BOWL DOUBLE DRAIN SINK (SBDD)

Range: Classic, Boss, Nice

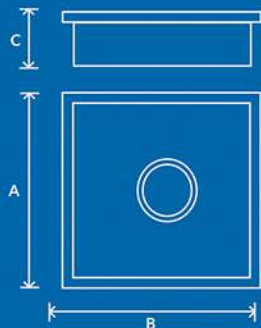
SL. No.	A" x B"	C"	Bowl size (in mm)
01	20" x 45"	7", 8", 9", 10"	390 X 560
02	20" x 48"	7", 8", 9", 10"	390 X 560



HANDMADE MATT FINISH KITCHEN SINK (HM)

Range: Elegance, Grace

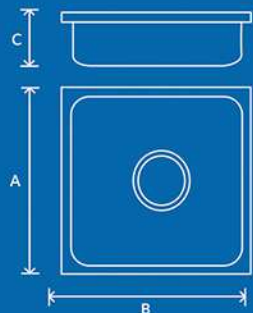
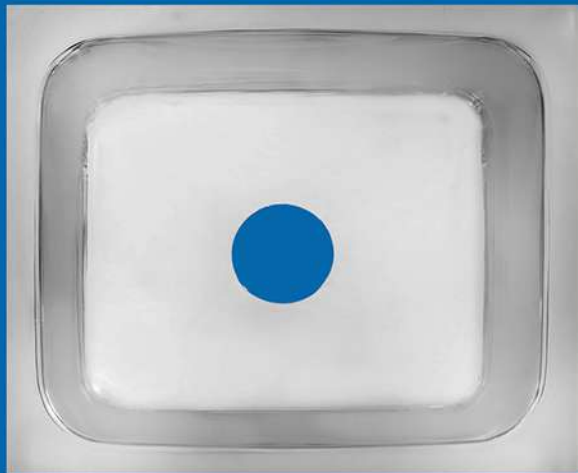
SL. No.	A" x B"	C"	Bowl size (in mm)
01	16" x 18"	7", 8", 9", 10"	356 X 407
02	17" x 20"	7", 8", 9", 10"	381 X 458
03	18" x 21"	7", 8", 9", 10"	407 x 483
04	18" x 24"	7", 8", 9", 10"	407 X 559



UPRIGHT DEEPDRAWN SQUARE SINGLE BOWL SINK (SSB)

Range: Quadro

SL. No.	A" x B"	C"	Bowl size (in mm)
01	16" x 18"	7", 8", 9", 10"	350 X 405
02	18" x 21"	7", 8", 9", 10"	375 x 455
03	18" x 24"	7", 8", 9", 10"	405 x 530
04	20" x 24"	7", 8", 9", 10"	445 X 545

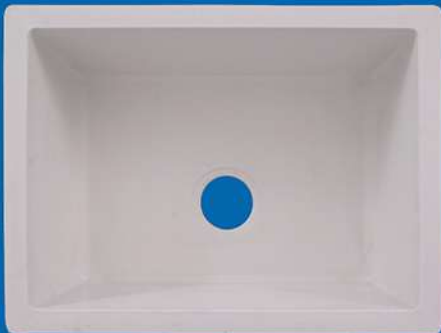


QUARTZ SINKS (QS)

Range : SILICA

SINGLE BOWL

SL. No.	A" x B"	C"	Bowl size (in mm)
01	18" x 21"	8", 9"	380 X 470
02	18" x 24"	8", 9"	380 X 525



SINGLE STEP BOWL

SL. No.	A" x B"	C"	Bowl size (in mm)
01	19" x 28.5"	8", 9"	380 X 665



SINGLE BOWL WITH DRAIN BOARD

SL. No.	A" x B"	C"	Bowl size (in mm)
01	19" x 32"	8", 9"	405 X 410



ACCESSORIES

All the accessories are available as per picture.
PVC, Stainless steel , brass strainer available.



Light 110mm and 75mm
PVC strainer with SS plate



Regular 110mm complete
stainless steel strainer



PVC CONNECTOR for all the
sinks having TWO BOWLS



Regular 110mm round
cap strainer with virgin
PVC cup with SS plate,
brass nut and reducer



complete stainless steel
strainer made of AISI
304 grade with basket



52mm PVC strainer with
SS plate and rubber
stopper

PACKAGING

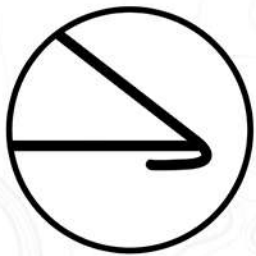


- Each sink in a polybag
- Individual box (Optional)
- Master carton of high quality hard – super dry 7 ply corrugation
- Corrugated angles in corner of master carton to prevent sinks from damages at transport
- All material used for packing are environment friendly and recyclable. (♻️)

TYPES OF FINISH



TYPES OF BENDING



Smooth Round Bending



In Set Bending



Set On Bending

FEATURES



Seamless One Piece Sink



Sound Reducing Rubber Under The Bowl



Protecting Film Over The Body (Optional)



Anti fungal/Sound reducing/bottom surface protecting ceramic coating



ISI Marked Sinks



AISI 304 Sinks (IS 5122)



CE Certified Sink



Virgin Stainless Steel

NOTE

- Shri Navkar can cater as per customers' special need
- All specifications rights are with Shri Navkar Metals Ltd. regarding its change
- For other latest models / developments refer the price list
- Product / Models Pictures are replicalike and represent the actual Product. At times they are subject to change as per market needs and utility.
- All the Products / Models are subject to stocks / inventory availability and lead time for actual supply.

SHRI NAVKAR METALS LTD.

JAINOX HOUSE, Plot no. 342/A, Road no. 39, G.I.D.C, Odhav, Ahmedabad -382415, GUJARAT, INDIA.

Ph.: +91-79-22871016, 22875515 Fax.: +91-79-22975515
Email: shrinavkar@shrinavkar.com | kitchensink@shrinavkar.com
URL : www.navkarsink.com, www.shrinavkar.com

PRESENCE

USA, Brazil, Mexico, South Africa, Saudi Arabia, U.A.E., Bangladesh, Sri Lanka, Thailand, China, Kenya, Tanzania, Ethiopia, Sudan, Qatar, Bahrain, Oman, Kuwait, & Mauritius.

DISPLAY STAND
FOR
DEALERS



NOTEPAD :

JAINOX GROUP
ESTD: 1957



An ISO 9001 : 2015 Company.
An ISO 14001 : 2015 Company.
A "CREDAI" (Confederation of Real Estate Developers' Association of India) member.
CE Certified Sinks.
A Government Recognised STAR rated Export House.
Duns No.: 91-845-9496.



IS 13983 : 1994



CML - 3628667